



0011120000001332000
1110220001100001100
0011001000101010001
001100108220300044011



SCALES CATALOGUE



Dinamica Generale, founded in Poggio Rusco, Mantova (Italy) in 1990, has always given maximum priority to research and innovation and is distinguished by its modern, international approach.

The company originally produced loading cells but, in just a few years, moved on to realize advanced electronic weighing systems and futuristic products (including custom made solutions) for the livestock, industrial and biomedical sectors.

Thanks to structural evolution and an exponential growth on international markets, Dinamica Generale has become, in less than twenty years, a reference point for the whole sector.

Future prospects are concentrated on the company's capacity for renewal and on maintaining maximum quality standards for both products and services.

SCALES

DINA3 CHECKER PG.4

DINA3 OIML PG.6

GEMINI PG.8

LIBRA PG.10

VIRGO PG.14

DINA3 CHECKER

Weighing
your vehicle is
no longer
a problem

THE PRODUCT

The axle weighing in order to check the weight and the overload of any vehicle.

20.000 kg per static and in motion axle weighing system, designed for weighing, overload prevention, fleet management and security application.

Especially indicated to control the flow of the carried material and the overload trucks, it helps to increase safety on the road.



FEATURES AND ADVANTAGES

- **Easy to use**
- **Easy installation** with a simple levelling from the top of the platforms
- **Warning message** if passage on the platforms was not correct
- **Weighs** up to 12 axles
- Allows for preset **customer code**
- Automatic and manual **print** of every operation
- Available in **any language** including languages with **special characters**
- **Internal memory system** for quick easy access to specific info
- **Overload control** with warning message
- Interface for the **direct communication** to the PC

ENVIRONMENTAL AND SYSTEM SPECIFICATION

Working temperature

- -30°C / +65°C

System protection grade

- IP68

Load cells protection grade

- IP68

Permitted speed

- 1 - 5 km/h

Load capacity for axle

- 20000 Kg (10 t x platform)

System accuracy

- 1% of gross weight

Dimension

- 810 x 800 x 87 mm

Admitted overload

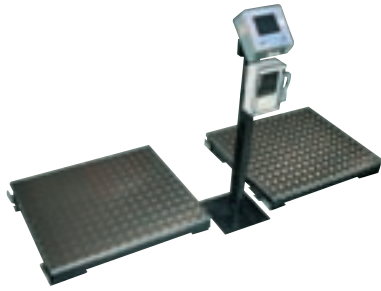
- + 50%

DINA3 CHECKER

THE SYSTEM

Purpose:

- to weigh ALL types of vehicles in ground application.



EVERY KIND OF VEHICLE

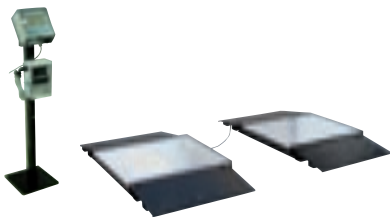
The system is composed of:

- 2 weighing platforms
- 1 support for electronic devices
- 1 weighing indicator
- 1 thermal printer
- 2 connection cables (10 m)
- 1 power supply cable (3.5 m)
- 1 power supplier 110 - 220 Vac / 12 Vdc
- 1 internal sound alarm



Purpose:

- to weigh ONLY vehicles with 2 axles in a MOBILE application.



NO MORE than 2 AXLES

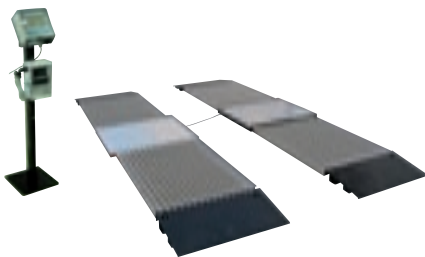
The system is composed of:

- DINA3 CHECKER
- Ramps Kit



Purpose:

- to weigh ALL types of vehicles in a MOBILE application. Add the the Levellers kit.



EVERY KIND OF VEHICLE

The system is composed of:

- DINA3 CHECKER
- Levellers Kit
- Ramps Kit



Optional available for all configurations:

- Weight repeater (Supplementary display)
- DTM DINA3 software + USB memory to transfer the data in the PC
- Traffic lights + external sound alarm for customer friendly operations
- Remote Control up to 25 meters

DINA3 OIML

Weighing
your vehicle is
no longer
a problem

THE PRODUCT

Veichles axle weighing approved to OIML R134 Class II.

20.000 kg per axle in motion; certified axle weighing system able to define the weight of any vehicle, in less than 25 seconds to an accuracy of max 1%.

A real alternative to the conventional weighbridge for law enforcement, with much more advantage. Especially indicated to control the flow of the carried material and the overload trucks, it helps to increase safety on the road.



FEATURES AND ADVANTAGES

- Metrological certification **OIML R134**
- **Easy to use**
- **Easy installation** with a simple levelling from the top of the platforms
- **Warning message** if passage on the platforms was not correct
- **Weighs** up to 12 axles
- Allows for preset **customer code**
- Automatic and manual **print** of every operation
- Available in **any language** including languages with **special characters**
- **Internal memory system** for quick easy access to specific info
- **Overload control** with warning message
- Interface for the **direct communication** to the PC

ENVIRONMENTAL AND SYSTEM SPECIFICATION

Working temperature

- -30°C / +65°C (-10°C / +40°C to be compliant with OIML R134 certification)

System protection grade

- IP68

Load cells protection grade

- IP68

Permitted speed

- 1 - 5 km/h

Load capacity for axle

- 20000 Kg (10 t x platform)

System accuracy

- max 1% of gross weight
(NOTE: site construction must strictly follow DG specifications to respect system accuracy)

Dimension

- 810 x 800 x 87 mm

Admitted overload

- + 50%

Purpose:

- to weigh ALL type of vehicles in FIXED application.

EVERY KIND of vehicle

The system is composed of:

- 2 weighing platforms
- 1 support for electronic devices
- 1 weighing indicator
- 1 thermal printer
- 2 connection cables (10 m)
- 1 power supply cable (3.5 m)
- 1 power supplier 110 - 220 Vac / 12 Vdc
- 1 internal sound alarm

Optional:

- Weight repeater (Supplementary display)
- DTM DINA3 software + USB memory to transfer the data in the PC
- Traffic lights + external sound alarm for customer friendly operations
- Remote Control up to 25 meters



Certifications



The systems is subject to a factory test prior to shipment, using test weights which are traceable to a national standard and which carry an annual calibration certificate.

The system is available also with metrological certification OIML R134 Class II norm.

NOTE: site construction must strictly follow DG specifications to respect OIML R134 Class II norm.

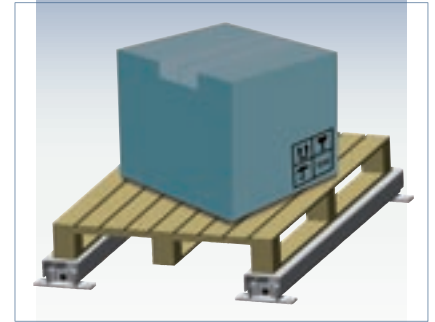
Installation

DG supplies a **kit** containing all necessary material and information for the construction of an optimal site.

The kit, besides mechanical components, includes also precise and intuitive instructions in order to install each single part and on how to lay the concrete. Moreover, for people interested in making or buying the mechanical components in their own Country, DG is available to supply technical drawings for their realization.

GEMINI

precision + simplicity
for *everyday*
weighing



THE PRODUCT

Universal weighing bars.



FEATURES AND ADVANTAGES

Proficiency

- Ability to change the dimension of the loading platform

Sturdiness

- High protection grade for the use in critical environments
- Guaranteed iron structure able to combine resistance and design

Simplicity

- Easy to move: it is a mobile structure that you can take easily in different places
- Easy to install
- No calibration necessary, the system is ready to be used
- Consecutive partial weighing with total calculation

ENVIRONMENTAL AND SYSTEM SPECIFICATION

Working temperature

- -30°C / +65°C

Computer protection grade

- IP68 (dust and water immersion)

Precision

- <+/-1Kg

If you need:

- *Weight reading*

Gemini Basic System**It is composed of:**

- 2 weighing bars
- 1 indicator STAD 04 HP
- 2 connection cables (L=5m)
- 1 power cable (L=3,5m)
- 1 power supplier 110 - 220 Vac / 12 Vdc

If you need:

- *Weight reading*
- *Weight repeater connection*
- *Printer connection or unloading data on PC*

Gemini Advanced System**It is composed of:**

- 2 weighing bars
- 1 indicator STAD 04 HP Full
- 2 connection cables (L=5m)
- 1 power cable (L=3,5m)
- 1 power supplier 110 - 220 Vac / 12 Vdc
- 1 Thermal printer

Optional:

- *Weight repeater with 5 digits 60 mm*
- *DTM 2009 Short to unload data on PC*

SHORT BARS/ LONG BARS

Total capacity: 1400/4000 Kg

SHORT BARS Dimensions: 800 x 100 x 100mm (l x d x h)

LONG BARS Dimensions: 1200 x 100 x 100mm (l x d x h)

Bars cable length: 5 m

STAD 04 HP**Highly efficient red led display**

5 digits 40 mm

Computer resolution reading

1 - 2 - 5 - 10

System power: 9.5 - 32 Vdc

(or 110/220 Vac with power supplier included)

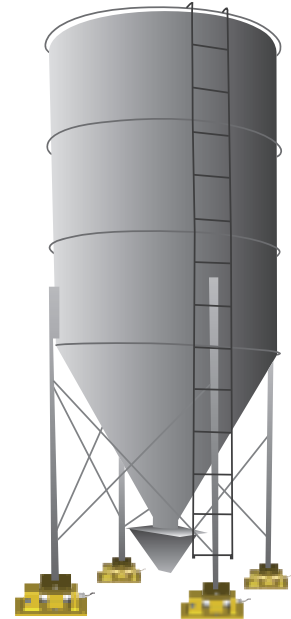
the capacity
to *fit* any
application



THE PRODUCT

Universal weighing units having various capacities (from 100 Kg to 25 t) connectable to every electronic weighing indicator that processes the load cell signal to display the weight of the material contained in silos, tanks, hoppers and platforms.

It also allows to download or send data to a PC for statistic analysis, for the best working process management.



FEATURES AND ADVANTAGES

Proficiency

- High level accuracy class C3

Sturdiness

- High protection grade for the use in critical application (IP68)
- Mechanical protection from side bumps
- Mechanical compensation of thermal swelling and transversal forces

Safety

- The structure guarantees the best and safer working of the load cell
- Anti-overturning safety system

Simplicity

- Easy to install
- No calibration necessary, the system is ready to be used

WHY SHOULD YOU BUY A LIBRA SYSTEM?

- precise electronic control of the used material
- reduction of the over-material
- financial savings

- precise electronic control of the stock-on-trade
- better management of times and purchasing materials
- financial savings

If you need:

- *Weight visualisation*
- *One component management*
- *Possibility to connect extra displays or radio-command*

Libra Basic System**It is composed of:**

- 1 indicator STAD 04 HP
- 1 weighing units junction box
- 1 connection cable box-indicator (L=5m)
- 1 power cable (L=3,5 m)
- 1 power supplier 110 - 220 Vac / 12 Vdc

Optional:

- Weight repeater display
- Easy control kit

If you need:

- *Weight visualisation*
- *Possibility to connect extra displays or radio-command*
- *Multi-component management (up to 99 formulas with 24 components each one)*
- *Possibility to download or send data to a PC*

Libra Advanced System**It is composed of:**

- 1 indicator WIN SCALE² HP FULL
- 1 weighing units junction box
- 1 connection cable box-indicator (L=5m)
- 1 power cable (L=3,5 m)
- 1 power supplier 110 - 220 Vac / 12 Vdc

Optional:

- Weight repeater display
- Easy control kit
- Thermal printer
- DTM 2009 Advanced to download and manage data on PC

Weighing unit for Libra System

Ref page 12 on this catalogue

The capacity is referred for each unit

DG-PA

Shear beam load cell

350/1000/2000 Kg

Dimensions

200 x 120 x 97 mm (l x d x h)



DG-PB

Shear beam load cell

5000 Kg

Dimensions

240 x 120 x 94 mm (l x d x h)



DG-PIN

Pin load cell

10000 Kg

Dimensions

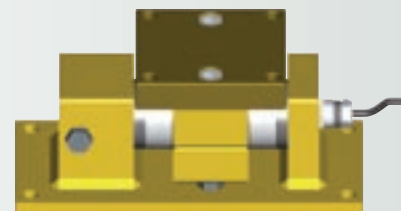
255 x 120 x 82 mm (l x d x h)

Pin load cell

25000 Kg

Dimensions

300 x 150 x 112 mm (l x d x h)



Other capacities available on request

Material of the load cells: Stainless steel

Load cells cable length: 5 m

Grade protection: IP67

Working temperature: -30°C / +65°C

The number of weighing units depends on the number of supports you need (3-4-6-8-...).

STAD 04 HP basic system

Highly efficient red led display

5 digits 40 mm

Features

One component control with alarm

System power: 9.5 - 32 Vdc

(or 110/220 Vac with power supplier included)

Indicator grade protection: IP68

(complete protection from dust and water immersion up to 1 meter)

Working temperature: -30°C / +65°C



WIN SCALE² HP FULL advanced system

Highly efficient red led display

5 digits 40 mm

LCD display for messages

16 characters, 15 mm

Features

99 formulas available with 24 components each one

PC interface with memory card

System power: 9.5 - 32 Vdc

(or 110/220 Vac with power supplier included)

Indicator grade protection: IP68

(complete protection from dust and water immersion up to 1 meter)

Working temperature: -30°C / +65°C



www.dinamicagenerale.com



For technical sheets of weighing units, load cells, and indicators

VIRGO

the
practical
solution
for **all** your weighing



THE PRODUCT

General crane scale with a rotatable hook and a 40mm led display.

FEATURES AND ADVANTAGES

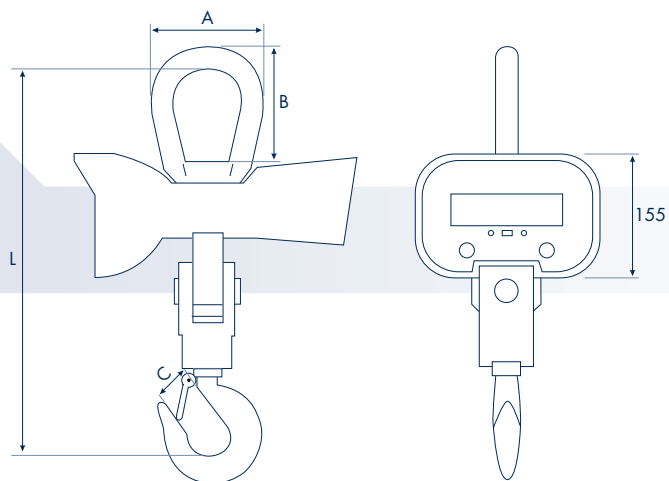
- **Aluminium-casting** case
- **Quality** integrated circuit
- **Ultra-ret** remote controlling design
- Alloy steel **high accuracy** loadcell
- **Rechargeable** lead acid battery
- **40mm** Led display

FUNCTIONS

- Division switching
- Measurement unit conversion
- Automatic power save
- Automatic battery inspection
- Idle mode for battery save
- Presetable tare

VIRGO system

Accuracy class: eqv.to OIML III
Tare range: 100% F.S.
Zero range: 4% F.S.
Safe overload: > 125% F.S.
Ultimate overload: >400% F.S.
Overload alarm: 100% F.S. + 9e
Battery: 6V/10Ah rechargeable lead acid battery
Battery life: ≥ 100h
Temperature range: -10°C -40°C
Adapter: 9V/1500mA (included)
Remote controlling distance: ≥10m (included)



VIRGO dimensions

Model	A (mm)	B (mm)	C (mm)	L (mm)	N.W.
VIRGO 1t	75	95	38	475	12 kg
VIRGO 2t	75	95	38	475	12 kg
VIRGO 3t	75	95	38	475	13 kg
VIRGO 5t	85	115	48	594	20 kg
VIRGO 10t	94	145	60	770	47 kg
VIRGO 15t	128	178	75	860	64 kg
VIRGO 20t	135	250	75	950	68 kg

CONTACTS

GENERAL INFORMATION

info@dinamicagenerale.com

SALES DEPARTMENT

sales@dinamicagenerale.com

R&D DEPARTMENT

technical@dinamicagenerale.com

CUSTOMER SERVICE

assistenza@dinamicagenerale.com

TDI ASSISTANCE



Technical assistance 24 hours a day, 365 days a year.

QUALITY & CERTIFICATIONS

High work standards are a mainstay of the Dinamica Generale philosophy.

The company obtained ISO 9001 certification in 1999 and in 2003 obtained adaptation to norm ISO 9001:2000 (VISION 2000) and the prestigious ISO 14001 environmental management system certification.





dinamica generale®

via Mondadori, 15
46025 Poggio Rusco (MN) - Italy
tel ++39 0386.52134
fax ++39 0386.51523
www.dinamicagenerale.com
info@dinamicagenerale.com

